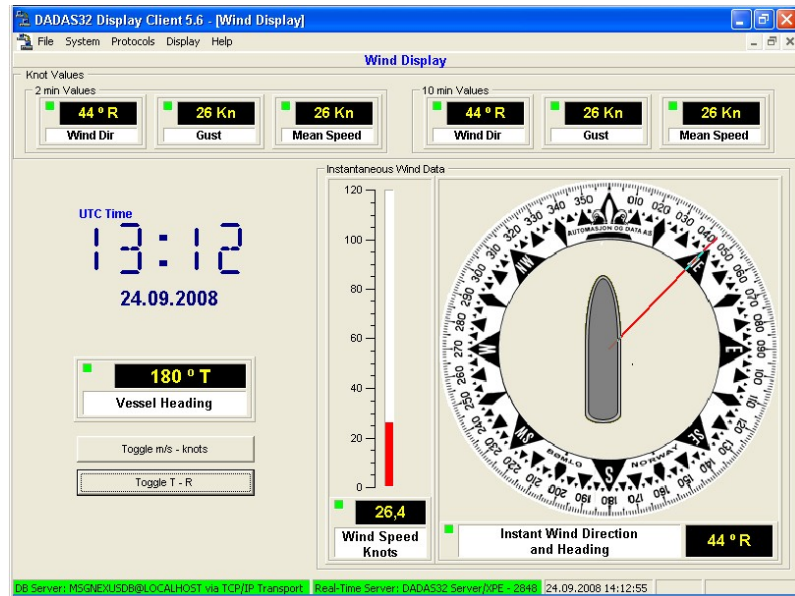


WIND SENSOR AND WIND DISPLAY FOR SHIPS

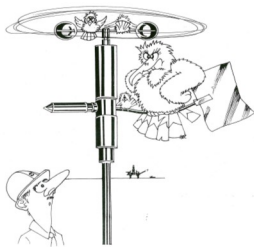


- WMT 52 is a compact but professional quality ultrasonic wind sensor—with no moving parts—specially suited for installation on ships and other demanding applications. The sensor is very rugged, watertight, survives vibration and needs practically no maintenance. Standard bracket for installation in mast is included.

- A+D can install several types of wind display, typically 8" or 12", showing real-time, gust and average values. These displays are based on rugged touchscreen panel-PCs running our very flexible WEATHER DISPLAY software and can easily be expanded with additional sensors later, if needed.

The display can also have additional pages of information if required, such as trend displays, graphic displays, history displays, additional sensors, etc.

- Wind data can also be transmitted between sensor and display by wireless modem.



Location—Location—Location:

- Many wind sensor users—in particular on ships and offshore platforms— have experienced unexpected measurement problems or corrupted data due to turbulence or obstruction from nearby constructions. A+D engineers have long experience in spotting such problems and can advise and recommend locations for best possible measurements.

Please contact us for details or advice.