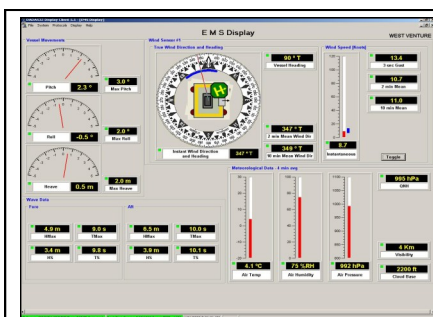


## METOCEAN PRODUCTS AND SERVICES FOR ONSHORE AND OFFSHORE PROJECTS

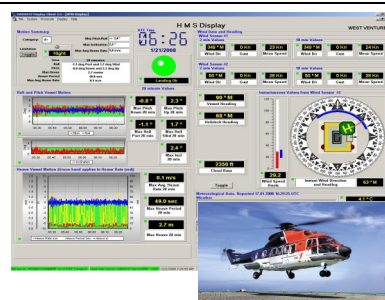


### Environmental Monitoring Systems

- often known as EMS/EMP systems, Weather Stations or Metocean systems are a very important tool for weather-critical operations onshore and offshore. EMS systems using the well proven DADAS software from A+D have been in use offshore for more than 20 years and have an excellent track record.

### Helideck Monitoring Systems

A+D has been involved in developing Helideck Monitoring Systems since these systems were first introduced. New systems will comply with all known rules and regulations worldwide, including the UK CAA CAP 437, Brazilian regulation NORMAM 27 as well as the Norwegian Standard for HMS systems and BSL D 5-1.



## METOCEAN PRODUCTS AND SERVICES



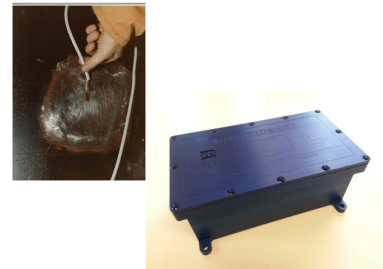
### Vessel Motion Monitoring Systems

A+D can deliver sensors and systems for monitoring 6 DOF for vessels and platforms for a wide variety of offshore applications.

This can also include specialized systems for monitoring of dynamic impact and for monitoring sea-sickness on smaller vessels.

### Structural Monitoring Systems

Structural Monitoring or Stress Monitoring of offshore structures can be incorporated in other system packages or delivered as a separate system. These systems can include strain gauges, pressure sensors, vibration sensors, angular sensors and other relevant parameters



### Meteorological and Oceanographic sensors

A+D have a vast experience in selecting, operating and maintaining the best sensors for the tough operational conditions offshore. Only sensors with an excellent track record will be recommended for use in such critical applications. A+D can supply everything from a single sensor to complete turn-key systems.

### Service work and calibration services

A+D has a qualified team of offshore service engineers, including experienced support engineers onshore, who can undertake service work on all makes and models of Metocean systems, EMP / EMS systems, HMS systems, meteorological and oceanographic sensors, etc. Our workshop is equipped for servicing and calibrating most kinds of sensors and instrumentation.

- A+D also provides a fast track supply line for spare parts and upgrades for existing Metocean systems.

